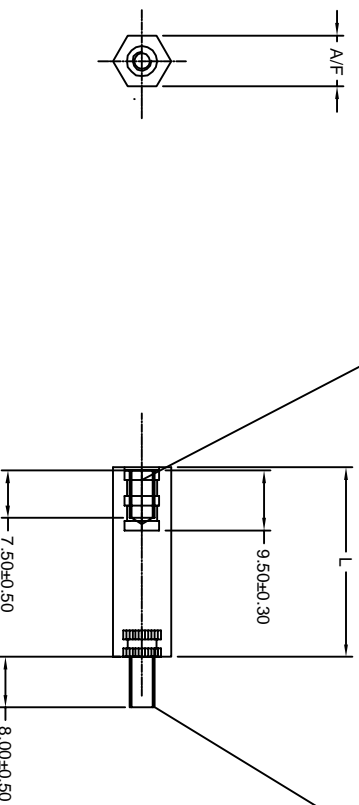


Brass Insert with M4 Tapping

MS Zink Plated Screw M4x8mm
(M4X6MM & M4X10MM ARE ALSO AVAILABLE)



AVAILABLE SIZES

A/F	L	THREADING	PART CODE
8	25	M4	AEHS8425NS
8	30	M4	AEHS8430NS
8	35	M4	AEHS8435NS
8	40	M4	AEHS8440NS
8	45	M4	AEHS8445NS
8	50	M4	AEHS8450NS
8	55	M4	AEHS8455NS
8	60	M4	AEHS8460NS
8	65	M4	AEHS8465NS
8	70	M4	AEHS8470NS
8	75	M4	AEHS8475NS
8	80	M4	AEHS8480NS
8	85	M4	AEHS8485NS

ANAND Enterprises		TOLERANCE UNLESS OTHERWISE STATED		± 0.2 MM
HEAT TREATMENT	N/A		UNIT	MM
MATERIAL	NYLON 6 BLACK	DATE	QTY.	
TITLE		DRG. NO.	071	
HEX SPACERS		SCALE	1:1	
MOLDED WITH INSERTS		SHEET		1 OF 1